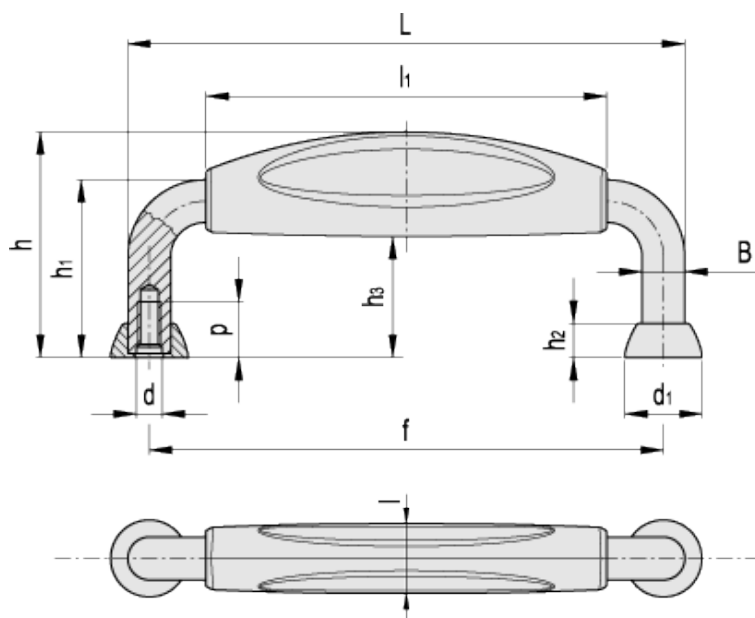


MMT.

Handle



ELESA Original design



technical informations

Material

Round cross section bar in fine ground steel with matte chrome-plated surface.

Insulation component

Glass-fibre reinforced polyamide based (PA) technopolymer, black colour, matte finish. Resistant to solvents, oils, greases and other chemical agents.

End bushes

Steel, chrome-plated matte surface.

Assembly

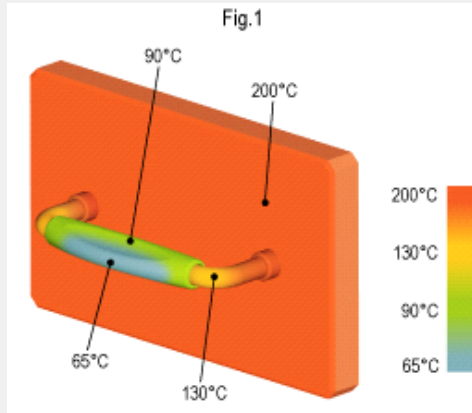
Tapped holes.

Features and applications

This handle is particularly suitable for applications on high temperature surfaces. The internal aeration canals of the technopolymer insulation component minimize the heat transfer. Its particular shape offers a comfortable grip and puts the operator's fingers away from the heat source.

Technical data

Figure n.1 shows the thermal gradient obtained from laboratory tests carried out at ambient temperature (23°C).



Standard Elements		Main dimensions										Mounting holes		Weight
Code	Description	L	f	h	B	l	d ₁	h ₁	h ₂	h ₃	l ₁	d	p	g
41051	MMT.130 M5	130	120±0.5	53	10	16	18	43	8	28	94	M5	13	132



ELESA models all rights reserved in accordance with the law. Always mention the source when reproducing our drawings.

STANDARD MACHINE ELEMENTS WORLDWIDE